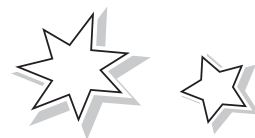
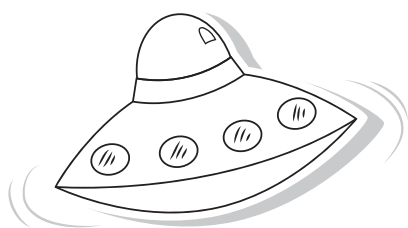




East Sussex
NATIONAL



YOUNG PERSON'S MENU



Traditional Afternoon Tea - £12.50



Selection of finger sandwiches:

Sausage and ketchup

Cheese

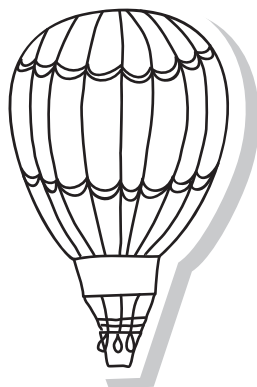
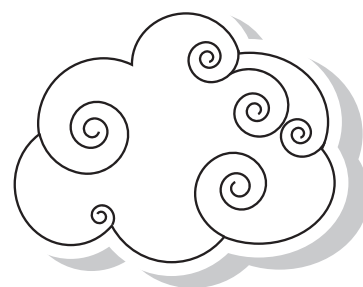
Jam

Chicken Pops

Freshly baked scone

Chocolate brownie

Lemon cake



Choice of milkshake, hot chocolate or soft drink

Children's Menu - 2 course: £9.50, 3 course: £12.50

Soup of the day with soldiers

Garlic bread with cheese

Cheese, ham and vegetable sticks with hummus and flat bread



Chicken breast with mashed potatoes, broccoli and gravy

Tomato pasta

Mini fish and chips with garden peas

Cheeseburger and chips



Chocolate brownie, vanilla ice cream

Fruit salad with sorbet and popping candy

Ice cream with chocolate sauce



All food is freshly prepared onsite. Should you have any food allergies or intolerances, please kindly speak to a member of our team about the ingredients in your meal. Thank you & please enjoy your meal.